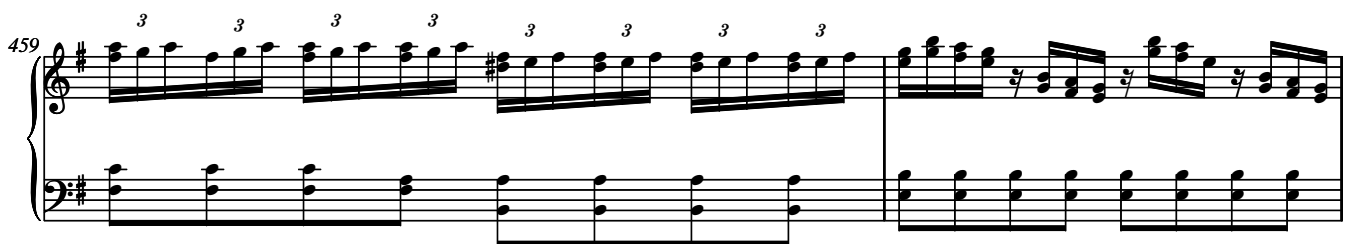
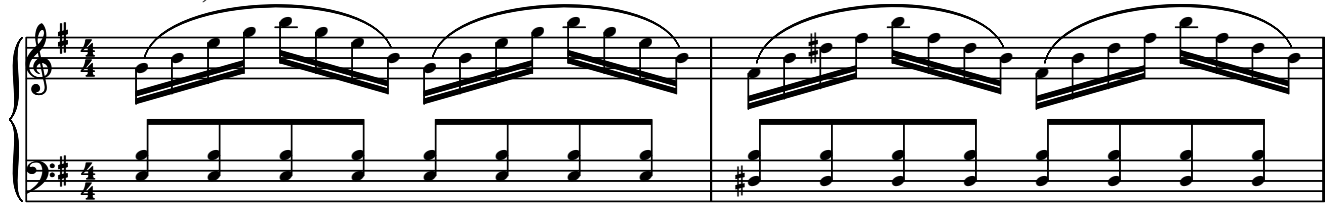


## 8. De torrente

Antonio Vivaldi  
(1678-1741)

### Dixit Dominus, RV 594



461  
Sop. solo

System 461 introduces a soprano solo. The soprano line begins with a rest followed by a melodic phrase. The piano accompaniment continues with a rhythmic pattern. The lyrics "De - tor - ren" are written below the piano staff.

De - tor - ren

464 Sop. solo

*tr*

te in vi - a bi - bet, in

466 Sop. solo

*tr*

vi - a bi - bet prop - te re - a e - xal ta

468 Sop. solo

469 Sop. solo

470 Sop. solo

bit, e - xal - ta

471 Sop. solo

472 Sop. solo

bit — ca —

474 Sop. solo

- put. De tor - ren — — —

477 Sop. solo

te in vi - a bi —

479 Sop. solo

- bet, prop - te re - a e - xal - ta —

481 Sop. solo

Measures 481-482. The vocal line features a melodic line with triplets and slurs. The piano accompaniment consists of a steady eighth-note bass line and a treble line with occasional chords.

482 Sop. solo

Measures 482-483. The vocal line continues with triplets and slurs. The piano accompaniment features a steady eighth-note bass line and a treble line with chords. The lyrics "put, e - xal -" are written below the vocal line.

483 Sop. solo

Measures 483-484. The vocal line continues with triplets and slurs. The piano accompaniment features a steady eighth-note bass line and a treble line with chords. The lyrics "- ta -" are written below the vocal line.

484 Sop. solo

Measures 484-485. The vocal line continues with triplets and slurs. The piano accompaniment features a steady eighth-note bass line and a treble line with chords.

485 Sop. solo

Measures 485-486. The vocal line continues with triplets and slurs. The piano accompaniment features a steady eighth-note bass line and a treble line with chords.

486 Sop. solo

bit ca - put, e - xal -

487 Sop. solo

ta

488 Sop. solo

bit, e - xal -

489 Sop. solo

ta

490 Sop. solo

491 Sop. solo

bit ca - put.

493

*tr*

This musical score segment contains three measures. Measure 491 features a Soprano solo with a melodic line of eighth notes, each beamed in groups of three and marked with a '3' above them. The lyrics 'bit ca - put.' are aligned with the notes. The piano accompaniment consists of a steady eighth-note bass line in the left hand and chords in the right hand. Measure 492 continues the piano accompaniment. Measure 493 shows the piano part concluding with a final chord in the right hand and a descending bass line in the left hand, marked with a 'tr' (trill) above the final note.